

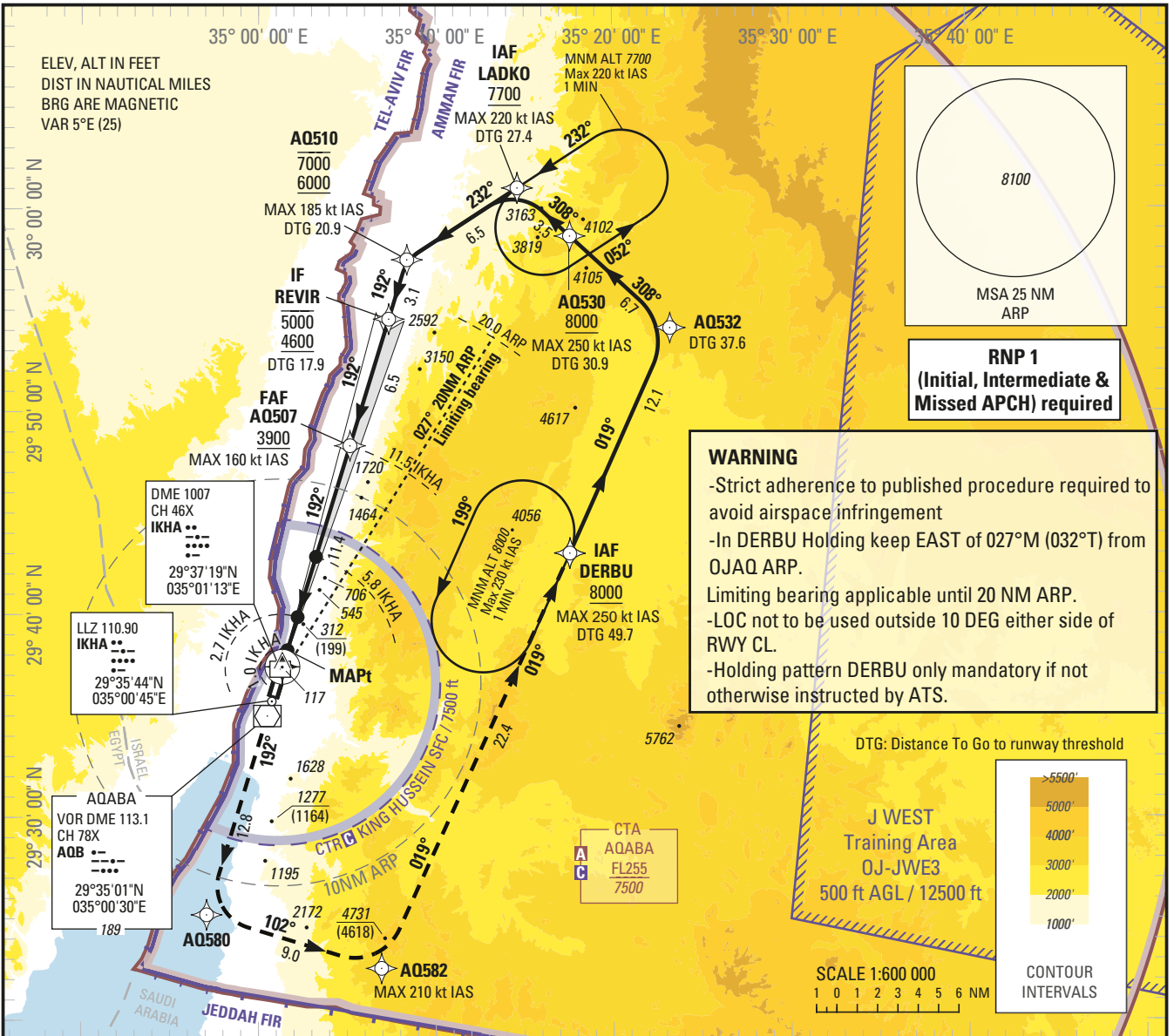
INSTRUMENT APPROACH CHART — ICAO

AERODROME ELEV 173 ft
HEIGHTS RELATED TO
THR RWY 19 — ELEV 113 ft

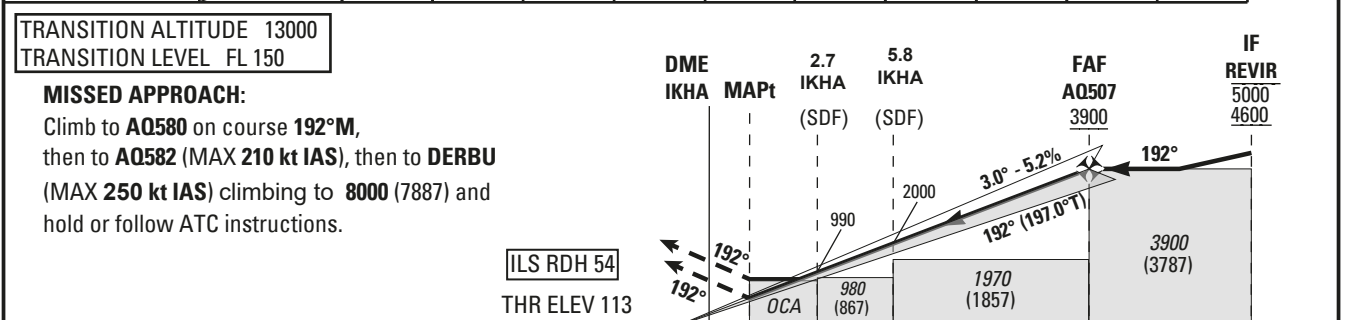
King Hussein Tower 119.2
Aqaba Sector 132.425

AQABA/King Hussein Intl. (OJAQ)

ILS Z RWY 19



NM to DME	IKHA	2	3	4	5	6	7	8	9	10	11
ALTITUDE		760	1080	1410	1730	2060	2390	2720	3060	3390	3730



NM to IKHA DME	0	1.0	2.7	5.8	11.5	18.0
NM to THR RWY 19	0.9	2.6	5.7	11.4	17.9	

(1) OCA (H)					(1) For additional minima, see OJAQ AD 2.24.8-19									
Straight-in Approach	Cat I 2.5%	1710 (1600)	1780 (1670)	1880 (1770)	1900 (1780)	GS	kt	70	85	100	115	130	145	160
	GP INOP 2.5%	2200 (2090)	2310 (2200)	2480 (2370)			min:s	9:00	7:25	6:18	5:29	4:51	4:21	3:56
Circling		Not authorized				Rate of descent	ft/min	370	450	530	610	690	770	850

CHANGE: SPEED AT DERBU

INSTRUCTIONS

ILS Z RWY 19 Minima

Minima ILS CAT I

The standard ILS CAT I Minima below are determined for ACFT performing an ILS CAT I procedure which are able to maintain a climbing slope greater than 2.5% during a missed APCH.

<i>Slope in missed approach</i>	<i>OCA (H)</i>			
	A	B	C	D/DL
3.0%	1290 (1170)	1360 (1250)	1480 (1370)	1490 (1380)
4.0%	580 (470)	670 (560)	810 (690)	820 (710)
5.0%	320 (200)			

Minima GP INOP

The standard GP INOP Minima below are determined for ACFT performing a GP INOP procedure which are able to maintain a climbing slope greater than 2.5% during a missed APCH.

<i>Slope in missed approach</i>	<i>OCA (H)</i>			
	A	B	C	D
3.0%	1660 (1550)	1800 (1680)	2000 (1890)	
4.0%	590 (470)	760 (650)	1030 (920)	
5.0%	560 (450)			

Aeronautical Data Tabulation: IAC RNP ILS Z RWY 19

WAYPOINT LIST					
Waypoint / Fix	Latitude	Longitude	Waypoint / Fix	Latitude	Longitude
LADKO	30°01'01.607"N	035°14'37.440"E	AQ530	29°58'39.219"N	035°17'35.565"E
AQ510	29°57'29.598"N	035°08'23.035"E	AQ507	29°48'19.842"N	035°05'09.632"E
REVIR	29°54'34.217"N	035°07'21.282"E	RW19	29°37'26.269"N	035°01'20.598"E
DERBU	29°43'01.646"N	035°17'34.251"E	AQ580	29°25'12.792"N	034°57'04.547"E
AQ532	29°54'07.665"N	035°23'14.652"E	AQ582	29°22'34.503"N	035°06'55.743"E

Holding instruction

Path Descriptor	Waypoint Identifier	Inbound Course °M (°T)	Leg Distance	Turn direction	Minimum Altitude (ft/FL)	Maximum Altitude (ft/FL)	Speed Limit (kt)	Magnetic Variation	Navigation Specification
Hold	DERBU	019 (024.0)	1 min	L	8000	14000	230	+5.0	RNP 1

Route Description: IAC RNP ILS Z RWY19

RNP ILS Z RWY19											
Serial Number	Path Descriptor	Waypoint Identifier	Fly - Over	Course °M (°T)	Magnetic Variation	Distance (NM)	Turn direction	Altitude (ft/FL)	MAX IAS (kt)	VPA/TCH (°/ft)	Navigation Accuracy (NM)
10	IF	LADKO	-	-	-	-	-	+7700	-220	-	RNP APCH
20	TF	AQ510	-	232 (237.0)	+5.0	6.5	-	-7000 +6000	-185	-	RNP APCH
30	TF	REVIR	-	192 (197.1)	+5.0	3.1	-	-5000 +4600	-	-	RNP APCH
10	IF	DERBU	-	-	-	-	-	+8000	-250	-	RNP APCH
20	HF	DERBU	Y	019 (024.0)	+5.0	-	L	+8000	-230	-	RNP APCH
30	TF	AQ532	-	019 (024.0)	+5.0	12.1	-	-	-	-	RNP APCH
40	TF	AQ530	-	308 (312.6)	+5.0	6.7	-	+8000	-250	-	RNP APCH
50	TF	LADKO	-	308 (312.6)	+5.0	3.5	-	+7700	-220	-	RNP APCH
60	TF	AQ510	-	232 (237.0)	+5.0	6.5	-	-7000 +6000	-185	-	RNP APCH
70	TF	REVIR	-	192 (197.1)	+5.0	3.1	-	-5000 +4600	-	-	RNP APCH
10	IF	REVIR	-	-	-	-	-	+4600	-	-	RNP APCH
20	TF	AQ507	-	192 (197.1)	+5.0	6.5	-	+3900	-160	-	RNP APCH
30	TF	RW19	Y	192 (197.0)	+5.0	11.4	-	@167	-	-3.0/ 54	RNP APCH
40	CF	AQ580	-	192 (197.0)	+5.0	12.8	-	-	-	-	RNP APCH
50	TF	AQ582	-	102 (107.0)	+5.0	9.0	-	-	-210	-	RNP APCH
60	TF	DERBU	-	019 (024.4)	+5.0	22.4	-	+8000	-250	-	RNP APCH